

Trumpet 1

The Star Spangled Banner

Francis Scott Key
arr. M. Rodgers

$\text{♩} = 96$

f

9 **A**

18 **B**

26 **C** *mf*

30 **D**

rit.

Detailed description: This is the musical score for the first trumpet part of 'The Star Spangled Banner'. It is written in 3/4 time with a tempo of quarter note = 96. The score consists of five staves of music. The first staff begins with a dynamic marking of *f* (forte). The second staff is marked with a boxed 'A' and starts at measure 9. The third staff is marked with a boxed 'B' and starts at measure 18, featuring three triplet markings. The fourth staff is marked with a boxed 'C' and a dynamic marking of *mf* (mezzo-forte), starting at measure 26. The fifth staff is marked with a boxed 'D' and starts at measure 30, ending with a 'rit.' (ritardando) marking.

Trumpet 2

The Star Spangled Banner

Francis Scott Key
arr. M. Rodgers

$\text{♩} = 96$

f

9 **A**

18 **B**

26 **C** *mf* **D**

rit.

Detailed description: This is the musical score for the second trumpet part of 'The Star Spangled Banner'. It is written in 3/4 time with a tempo of quarter note = 96. The score consists of five staves of music. The first staff begins with a dynamic marking of *f* (forte). The second staff is marked with a boxed 'A' and starts at measure 9. The third staff is marked with a boxed 'B' and starts at measure 18, featuring three triplet markings. The fourth staff is marked with a boxed 'C' and a dynamic marking of *mf* (mezzo-forte), starting at measure 26. The fifth staff is marked with a boxed 'D' and starts at measure 30, ending with a 'rit.' (ritardando) marking.

TOUCHDOWN

Trumpet 1

Arr. Stephen Rodgers

Musical score for Trumpet 1, measures 1-21. The score is written in 2/4 time with a key signature of one flat (B-flat). It consists of three staves. The first staff contains measures 1-10. The second staff, marked with a double bar line and the number 11, contains measures 11-20. The third staff, marked with a double bar line and the number 21, contains measure 21. The notes in measure 21 are B, E, D, F, O, R, D, with diamond-shaped accents under the letters B, E, D, F, O, and R.

B E D F O R D

Touchdown

Trumpet 2

Arr. Stephen Rodgers

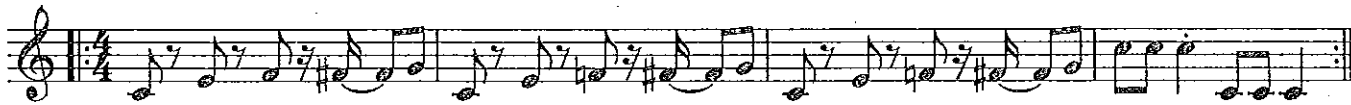
Musical score for Trumpet 2, measures 1-21. The score is written in 2/4 time with a key signature of one flat (B-flat). It consists of three staves. The first staff contains measures 1-10. The second staff, marked with a double bar line and the number 12, contains measures 11-20. The third staff, marked with a double bar line and the number 22, contains measure 21. The notes in measure 21 are B, E, D, F, O, R, D, with diamond-shaped accents under the letters B, E, D, F, O, and R.

B E D F O R D

Stands Songs

Trumpet in B \flat

$\text{♩} = 120$ "Go Big Blue"



5 $\text{♩} = 180$ Song #2



12 $\text{♩} = 140$ "Apache"



17 $\text{♩} = 140$ "Eat 'em Up"



22



Trumpet 1

Come and Get It

Performed by Selena Gomez
Arranged by Stephen Rodgers

Musical score for Trumpet 1, consisting of five staves of music in 4/4 time. The key signature has two flats (B-flat and E-flat). The first staff begins with a dynamic marking of *mf* and ends with a boxed measure number 10. The second staff begins with a dynamic marking of *ff*. The third staff ends with a boxed measure number 18. The fourth staff begins with a measure number 18. The fifth staff begins with a measure number 22.

Trumpet 2

Come and Get It

Performed by Selena Gomez
Arranged by Stephen Rodgers

Musical score for Trumpet 2, consisting of three staves of music in 4/4 time. The key signature has two flats (B-flat and E-flat). The first staff begins with a dynamic marking of *mf* and ends with a boxed measure number 10. The second staff begins with a dynamic marking of *f* and ends with a boxed measure number 18. The third staff begins with a measure number 18.

Trumpet 1

Epic Sax Man (Run Away)

Arr. Stephen Rodgers

Musical score for Trumpet 1. The score is in treble clef with a key signature of one sharp (F#) and a tempo of 120. It begins with a whole rest for two measures, followed by a double bar line and a 4/4 time signature. The music starts with a *ff* dynamic. The first line contains measures 2 through 4. The second line starts at measure 5 and includes a first ending (1.) and a second ending (2.).

Trumpet 2

Epic Sax Man (Run Away)

Arr. Stephen Rodgers

Musical score for Trumpet 2. The score is in treble clef with a key signature of one sharp (F#) and a tempo of 120. It begins with a whole rest for two measures, followed by a double bar line and a 4/4 time signature. The music starts with a *ff* dynamic. The first line contains measures 2 through 4. The second line starts at measure 5 and includes a first ending (1.) and a second ending (2.).

Trumpet 1

Fanfare - 2015

"Monty Python and the Holy Grail"

de Wolfe
Arr. Chilcott & Rodgers

♩=120

Musical score for Trumpet 1. The score is written in 4/4 time with a key signature of one flat (Bb). It consists of two staves. The first staff contains the main melody with various articulations such as accents and slurs. The second staff begins with a first ending bracketed and marked '1.', followed by a double bar line and a second ending marked '2.'. The second ending includes a triplet of eighth notes and concludes with a double bar line.

Trumpet 2

Fanfare - 2015

"Monty Python and the Holy Grail"

de Wolfe
Arr. Chilcott & Rodgers

♩=120

Musical score for Trumpet 2. The score is written in 4/4 time with a key signature of one flat (Bb). It consists of two staves. The first staff contains the main melody with various articulations such as accents and slurs. The second staff begins with a first ending bracketed and marked '1.', followed by a double bar line and a second ending marked '2.'. The second ending includes a triplet of eighth notes and concludes with a double bar line.

Trumpet 3

Fanfare - 2015

"Monty Python and the Holy Grail"

de Wolfe
Arr. Chilcott & Rodgers

♩=120

Musical score for Trumpet 3. The score is written in 4/4 time with a key signature of one flat (Bb). It consists of two staves. The first staff contains the main melody with various articulations such as accents and slurs. The second staff begins with a first ending bracketed and marked '1.', followed by a double bar line and a second ending marked '2.'. The second ending includes a triplet of eighth notes and concludes with a double bar line.

Imperial March

Trumpet in B \flat

Musical notation for the Trumpet in B \flat part of the Imperial March. The piece is in 4/4 time. The first measure is marked with a '2' above it, indicating a second ending. The dynamic marking *ff* (fortissimo) is placed below the second measure. The notation consists of a single staff with a treble clef and a key signature of one flat (B \flat).

Lights

Trumpet

Ellie Goulding
Arr. Stephen Rodgers

$\text{♩} = 120$

Musical notation for the Trumpet part of the song 'Lights'. The piece is in 4/4 time with a tempo of 120 beats per minute. The key signature has two flats (B \flat , E \flat). The dynamic marking *f* (forte) is placed below the first measure. The notation consists of four staves, with measure numbers 5, 9, 10, and 13 indicated at the beginning of their respective lines. A boxed number '9' is placed above the ninth measure of the second staff.

Low Rider

Trumpet

arr. Stephen Rodgers

$\text{♩} = 140$

Musical notation for the Trumpet part of the song 'Low Rider'. The piece is in 4/4 time with a tempo of 140 beats per minute. The key signature has one flat (B \flat). The notation consists of four staves, with measure numbers 8, 17, 21, 26, and 31 indicated at the beginning of their respective lines. A boxed number '21' is placed above the 21st measure of the second staff.

Trumpet 1

Radioactive

Imagine Dragons
Arr. Stephen Rodgers

Gasp In Exhale **9**

$\text{♩} = 150$

9 **17** **25**

Trumpet 2

Radioactive

Imagine Dragons
Arr. Stephen Rodgers

Gasp In Exhale **9**

$\text{♩} = 150$

9 **17** **25**

Trumpet 1

Safe and Sound

Capital Cities
Arr. Stephen Rodgers

Musical score for Trumpet 1, featuring three staves of music in 4/4 time. The first staff begins with a dynamic marking of *f* and includes a measure rest of 5 measures. The second staff starts at measure 12 with a dynamic marking of *mf* and includes a measure rest of 13 measures. The third staff starts at measure 21 with a dynamic marking of *f* and includes a measure rest of 21 measures. The music consists of eighth and sixteenth note patterns.

Trumpet 2

Safe and Sound

Capital Cities
Arr. Stephen Rodgers

Musical score for Trumpet 2, featuring three staves of music in 4/4 time. The first staff begins with a dynamic marking of *f* and includes a measure rest of 5 measures. The second staff starts at measure 12 with a dynamic marking of *mf* and includes a measure rest of 13 measures. The third staff starts at measure 21 with a dynamic marking of *f* and includes a measure rest of 21 measures. The music consists of eighth and sixteenth note patterns.

Trumpet 1

Titanium

David Guetta
Arr. Stephen Rodgers

Play 4X

5

Detailed description: This block contains the first five measures of the Trumpet 1 part for 'Titanium'. The music is in 4/4 time and B-flat major. Measure 1 starts with a quarter rest, followed by a dotted quarter note G4, an eighth note A4, and a quarter note Bb4. Measures 2-4 continue with eighth and quarter notes, including a half note G4 in measure 3. Measure 5 ends with a quarter note G4 and a quarter rest. The notation includes dynamic markings and articulation marks.

Trumpet 2

Titanium

David Guetta
Arr. Stephen Rodgers

Play 4X

Detailed description: This block contains the first four measures of the Trumpet 2 part for 'Titanium'. The music is in 4/4 time and B-flat major. Measure 1 starts with a quarter rest, followed by a dotted quarter note G4, an eighth note A4, and a quarter note Bb4. Measures 2-4 continue with eighth and quarter notes, including a half note G4 in measure 3. Measure 4 ends with a quarter note G4 and a quarter rest. The notation includes dynamic markings and articulation marks.

Trumpet 1

Tribute to Troy

Arr. Stephen Rodgers

$\text{♩} = 88$

4

ff

7

Detailed description: This block contains the first seven measures of the Trumpet 1 part for 'Tribute to Troy'. The music is in 4/4 time and B-flat major. Measure 1 starts with a quarter rest, followed by a dotted quarter note G4, an eighth note A4, and a quarter note Bb4. Measures 2-4 continue with eighth and quarter notes, including a half note G4 in measure 3. Measure 5 starts with a quarter rest, followed by a dotted quarter note G4, an eighth note A4, and a quarter note Bb4. Measures 6-7 continue with eighth and quarter notes, including a half note G4 in measure 6. The notation includes dynamic markings and articulation marks.

Trumpet 2

Tribute to Troy

Arr. Stephen Rodgers

$\text{♩} = 88$

4

ff

7

Detailed description: This block contains the first seven measures of the Trumpet 2 part for 'Tribute to Troy'. The music is in 4/4 time and B-flat major. Measure 1 starts with a quarter rest, followed by a dotted quarter note G4, an eighth note A4, and a quarter note Bb4. Measures 2-4 continue with eighth and quarter notes, including a half note G4 in measure 3. Measure 5 starts with a quarter rest, followed by a dotted quarter note G4, an eighth note A4, and a quarter note Bb4. Measures 6-7 continue with eighth and quarter notes, including a half note G4 in measure 6. The notation includes dynamic markings and articulation marks.