

Trombone 1

Arr. Stephen Rodgers

12

23

B E D F O R D

Trombone 2

Touchdown

Arr. Stephen Rodgers

12

23

B E D F O R D

The Star Spangled Banner

$J=96$

Francis Scott Key
arr. M. Rodgers

f

9 **A**

18 **B**

mf

26 **C**

30 **D**

rit.

Trombone

Stands Songs

♩=120 "Go Big Blue"



5 ♩=180 Song #2



12 ♩=140 "Apache"



17 ♩=140 "Eat 'em Up"



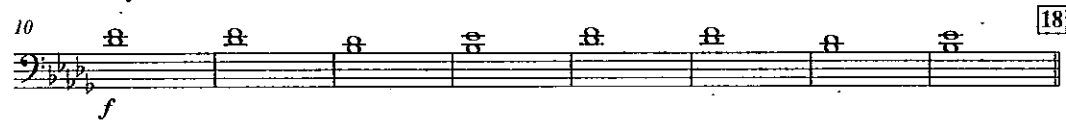
22



Trombone

Come and Get It

Performed by Selena Gomez
Arranged by Stephen Rodgers



Trombone

Epic Sax Man (Run Away)

Arr. Stephen Rodgers

$\text{♩} = 120$

2

f

5

1. 2.

Detailed description: This is the musical score for the Trombone part of 'Epic Sax Man (Run Away)'. It is written in bass clef with a key signature of one flat (Bb) and a 4/4 time signature. The tempo is marked as quarter note = 120. The score begins with a double bar line and a fermata, followed by a measure with a '2' above it. The first staff contains measures 2 through 5, starting with a dynamic marking of *f*. The second staff contains measures 6 through 9, with first and second endings indicated by '1.' and '2.' above the staff. The piece concludes with a double bar line.

Trombone

Imperial March

3

ff

Detailed description: This is the musical score for the Trombone part of 'Imperial March'. It is written in bass clef with a key signature of two flats (Bb, Eb) and a 4/4 time signature. The score consists of two staves. The first staff contains measures 1 through 6, featuring a rhythmic pattern of eighth notes with triplet markings (indicated by a '3' and a bracket) under measures 2, 3, 4, 5, and 6. The second staff contains measures 7 through 9, starting with a dynamic marking of *ff*. The piece ends with a double bar line.

Trombone

Lights

Ellie Goulding
Arr. Stephen Rodgers

$\text{♩} = 120$

8

9

13

Detailed description: This is the musical score for the Trombone part of 'Lights'. It is written in bass clef with a key signature of three flats (Bb, Eb, Ab) and a 4/4 time signature. The tempo is marked as quarter note = 120. The score consists of three staves. The first staff contains measures 1 through 7. The second staff contains measures 8 through 12, with a circled '9' above measure 9. The third staff contains measures 13 through 16. The piece concludes with a double bar line.

Low Rider

Trombone

arr. Stephen Rodgers

$\text{♩} = 140$

Musical score for Trombone, featuring five staves of music. The score includes measure numbers 8, 15, 21, 23, and 29. The music is written in bass clef with a key signature of two flats and a 4/4 time signature.

Trombone

Radioactive

Imagine Dragons
Arr. Stephen Rodgers

Musical score for Trombone, featuring four staves of music. The score includes measure numbers 9, 17, 25, and 29. The music is written in bass clef with a key signature of two flats and a 4/4 time signature. Dynamics include *p*, *mp*, and *f*. Performance instructions include "Gasp In" and "Exhale".

Trombone

Safe and Sound

Capital Cities
Arr. Stephen Rodgers

Musical score for Trombone, featuring two staves of music. The score includes measure numbers 5, 13, and 21. The music is written in bass clef with a key signature of two flats and a 4/4 time signature. Dynamics include *f*, *p*, and *mp*.

Trombone Baritone

Titanium

David Guetta
Arr. Stephen Rodgers

Play 4X



Trombone

Tribute to Troy

Arr. Stephen Rodgers

Musical notation for the Trombone part of 'Tribute to Troy'. It consists of two staves in bass clef with a key signature of two flats (B-flat and E-flat) and a common time signature (C). The tempo is marked as quarter note = 88. The first staff begins with a measure containing a whole rest, followed by a measure with a whole note G2 marked with a forte (*ff*) dynamic and a breath mark (v). The second staff starts at measure 8 with a whole note G2 marked with a breath mark (v), followed by a whole note F2, a whole note E2, and a whole note D2, all marked with breath marks (v). The piece concludes with a double bar line.