

Snare Drum

Stands Songs

♩=120 "Go Big Blue"

Musical notation for the snare drum part of "Go Big Blue". It features a 4/4 time signature and a tempo of 120 beats per minute. The notation consists of a single staff with a series of eighth notes, each marked with an accent (>), creating a consistent rhythmic pattern.

4

♩=180 Song #2

Musical notation for the snare drum part of "Song #2". It starts with a 4/4 time signature and a tempo of 180 beats per minute. The notation shows a sequence of eighth notes followed by a double bar line, then a series of quarter notes with eighth rests.

11

♩=140 "Apache"

Musical notation for the snare drum part of "Apache". It begins with a 4/4 time signature and a tempo of 140 beats per minute. The notation includes eighth notes, quarter notes, and a half note with a fermata, indicating a specific rhythmic feel.

14

Musical notation for the snare drum part of "Song #3". It features a 4/4 time signature and a tempo of 140 beats per minute. The notation consists of eighth notes with accents, followed by a double bar line and a final quarter note.

17

♩=140 "Eat 'em Up"

Musical notation for the snare drum part of "Eat 'em Up". It starts with a 4/4 time signature and a tempo of 140 beats per minute. The notation includes eighth notes, quarter notes, and a section of four measures with slash marks, indicating a specific rhythmic pattern.

24

Musical notation for the snare drum part of "Song #4". It features a 4/4 time signature and a tempo of 140 beats per minute. The notation includes eighth notes, quarter notes, and a final section with a double bar line and a large number '6' above it, possibly indicating a measure count or a specific drumming technique.

♩=120 "Go Big Blue"



5 ♩=180 Song #2



12 ♩=140 "Apache"



15



17 ♩=140 "Eat 'em Up"

TACET



Stands Songs

Marching Bass Drum

♩=120 "Go Big Blue"

Musical notation for the first song, "Go Big Blue". It features a marching bass drum staff with a 2/4 time signature and a tempo of 120 beats per minute. The notation consists of a series of rhythmic patterns, including eighth and sixteenth notes, and rests, with some notes beamed together.

5 ♩=180 Song #2

Musical notation for the second song, "Song #2". It features a marching bass drum staff with a tempo of 180 beats per minute. The notation includes a series of rhythmic patterns, including eighth and sixteenth notes, and rests, with some notes beamed together.

12 ♩=140 "Apache"

Musical notation for the third song, "Apache". It features a marching bass drum staff with a tempo of 140 beats per minute. The notation consists of a series of rhythmic patterns, including eighth and sixteenth notes, and rests, with some notes beamed together.

17 ♩=140 "Eat 'em Up"

Musical notation for the fourth song, "Eat 'em Up". It features a marching bass drum staff with a tempo of 140 beats per minute. The notation consists of a series of rhythmic patterns, including eighth and sixteenth notes, and rests, with some notes beamed together.

23

Musical notation for the final section of the page. It features a marching bass drum staff with a tempo of 140 beats per minute. The notation consists of a series of rhythmic patterns, including eighth and sixteenth notes, and rests, with some notes beamed together. A large number "6" is written above the staff at the end of the section.

Snare Drum

Epic Sax Man (Run Away)

Arr. Stephen Rodgers

♩=120

Musical notation for Snare Drum, measures 1-5. The first staff shows a rhythmic pattern of quarter notes. The second staff shows a 4/4 time signature and a pattern of eighth notes with accents. A first ending bracket covers measures 3-4, and a second ending bracket covers measures 5-6.

Marching Tenor Drums

Epic Sax Man (Run Away)

Arr. Stephen Rodgers

♩=120

Musical notation for Marching Tenor Drums, measures 1-5. The first staff shows a rhythmic pattern of quarter notes with a dynamic marking of *f*. The second staff shows a 4/4 time signature and a pattern of eighth notes with accents. A first ending bracket covers measures 3-4, and a second ending bracket covers measures 5-6.

Marching Bass Drum

Epic Sax Man (Run Away)

Arr. Stephen Rodgers

♩=120

First staff of music for Marching Bass Drum. It begins with a treble clef and a common time signature. The first four measures contain quarter notes: C4, G3, C4, G3. The fifth measure contains a dotted quarter note C4. The sixth measure contains a dotted quarter note G3. The seventh measure contains a dotted quarter note C4. The eighth measure contains a dotted quarter note G3. The ninth measure contains a dotted quarter note C4. The tenth measure contains a dotted quarter note G3. The eleventh measure contains a dotted quarter note C4. The twelfth measure contains a dotted quarter note G3. The thirteenth measure contains a dotted quarter note C4. The fourteenth measure contains a dotted quarter note G3. The fifteenth measure contains a dotted quarter note C4. The sixteenth measure contains a dotted quarter note G3. The piece ends with a double bar line.

5

Second staff of music for Marching Bass Drum, starting at measure 5. It contains two endings. The first ending (1.) consists of measures 5 through 10, ending with a repeat sign. The second ending (2.) consists of measures 11 through 16, ending with a double bar line.

Marching Cymbals

Epic Sax Man (Run Away)

Arr. Stephen Rodgers

♩=120

First staff of music for Marching Cymbals. It begins with a treble clef and a common time signature. The first measure contains a whole note C4. The second measure contains a whole note G3. The third measure contains a whole note C4. The fourth measure contains a whole note G3. The fifth measure contains a whole note C4. The sixth measure contains a whole note G3. The seventh measure contains a whole note C4. The eighth measure contains a whole note G3. The ninth measure contains a whole note C4. The tenth measure contains a whole note G3. The piece ends with a double bar line.

6

Second staff of music for Marching Cymbals, starting at measure 6. It contains two endings. The first ending (1.) consists of measures 6 through 11, ending with a repeat sign. The second ending (2.) consists of measures 12 through 16, ending with a double bar line.

Snare Drum

Safe and Sound

Capital Cities
Arr. Stephen Rodgers

Musical score for Snare Drum in 4/4 time. The score consists of four staves. The first staff begins with a dynamic marking of *f*. The second staff begins with a dynamic marking of *p*. The third staff contains a six-measure rest, with a boxed number '6' above it, and a boxed number '21' above the first measure of the following staff. The fourth staff continues the rhythmic pattern. Boxed numbers '5' and '13' are placed at the end of the first and second staves, respectively.

Marching Tenor Drums

Safe and Sound

Capital Cities
Arr. Stephen Rodgers

Musical score for Marching Tenor Drums in 4/4 time. The score consists of four staves. The first staff begins with a dynamic marking of *f* and ends with a boxed number '5'. The second staff begins with a dynamic marking of *p* and ends with a boxed number '13'. The third staff contains a six-measure rest, with a boxed number '6' above it, and a boxed number '21' above the first measure of the following staff. The fourth staff continues the rhythmic pattern.

Marching Bass Drum

Safe and Sound

Capital Cities
Arr. Stephen Rodgers

Musical score for Marching Bass Drum in 4/4 time. The score consists of three staves. The first staff begins with a dynamic marking of *f* and ends with a boxed number '5'. The second staff contains a six-measure rest, with a boxed number '6' above it, and boxed numbers '13' and '21' above the first and second measures of the following staff, respectively. The third staff continues the rhythmic pattern.

Snare Drum

Tribute to Troy

Arr. Stephen Rodgers

$\text{♩} = 88$

Musical score for Snare Drum, consisting of three staves. The first staff starts at measure 1 and ends at measure 7. The second staff starts at measure 5 and ends at measure 7. The third staff starts at measure 8 and ends at measure 11. The music is in common time (C) and features a rhythmic pattern of eighth notes with triplet markings (3) under groups of three notes.

Marching Tenor Drums

Tribute to Troy

Arr. Stephen Rodgers

$\text{♩} = 88$

Musical score for Marching Tenor Drums, consisting of three staves. The first staff starts at measure 1 and ends at measure 7. The second staff starts at measure 5 and ends at measure 7. The third staff starts at measure 8 and ends at measure 11. The music is in common time (C) and features a rhythmic pattern of eighth notes with triplet markings (3) under groups of three notes.

Marching Bass Drum

Tribute to Troy

Arr. Stephen Rodgers

$\text{♩} = 88$



6



Marching Cymbals

Tribute to Troy

Arr. Stephen Rodgers

$\text{♩} = 88$



6



Lights

Snare Drum

Ellie Goulding
Arr. Stephen Rodgers

♩=120

On Cymbals

Musical notation for Snare Drum, 4/4 time, tempo 120. The notation consists of four staves. The first staff starts with a 7-measure rest followed by a rhythmic pattern of eighth notes with 'x' marks above them. The second staff is marked with a '5' and a boxed '9' at the end. The third staff is marked with a '9'. The fourth staff is marked with a '13' and ends with a double bar line.

Lights

Tenor Drums

Ellie Goulding
Arr. Stephen Rodgers

♩=120

Musical notation for Tenor Drums, 4/4 time, tempo 120. The notation consists of four staves. The first staff starts with a 7-measure rest followed by a rhythmic pattern of eighth notes. The second staff is marked with a '5' and a boxed '9' at the end. The third staff is marked with a '10'. The fourth staff is marked with a '14' and ends with a double bar line.

Bass Drum

Lights

Ellie Goulding
Arr. Stephen Rodgers

♩=120



7

9



13



Titanium

Snare Drum

David Guetta
Arr. Stephen Rodgers

Play 4X
3rd & 4th X only



6



Titanium

Tenor Drums

David Guetta
Arr. Stephen Rodgers

Play 4X
3rd & 4th X only



Titanium

Bass Drum

David Guetta
Arr. Stephen Rodgers

Play 4X
3rd & 4th X only



5



Titanium

Cymbals

David Guetta
Arr. Stephen Rodgers

Play 4X



7



Imperial March

Snare Drum

First staff of music for Snare Drum in 4/4 time. It features a rhythmic pattern of eighth notes with triplet markings (brackets with the number 3) under the first three notes of each measure.

3

Second staff of music for Snare Drum in 4/4 time, continuing the rhythmic pattern with triplet markings.

Imperial March

Marching Tenor Drums

First staff of music for Marching Tenor Drums in 4/4 time. It features a rhythmic pattern of eighth notes with triplet markings (brackets with the number 3) under the first three notes of each measure.

3

Second staff of music for Marching Tenor Drums in 4/4 time, continuing the rhythmic pattern with triplet markings.

Imperial March

Marching Bass Drum

Musical notation for Marching Bass Drum in 4/4 time. It features a rhythmic pattern of eighth notes with triplet markings (brackets with the number 3) under the first three notes of each measure.

Imperial March

Marching Cymbals

Musical notation for Marching Cymbals in 4/4 time. It features a rhythmic pattern of eighth notes with a '2' marking above the first measure, indicating a two-measure rest.

Come and Get It

Performed by Selena Gomez
Arranged by Stephen Rodgers

On Rim

10

18

18

12

16

Come and Get It

Marching Tenor Drums

Performed by Selena Gomez
Arranged by Stephen Rodgers

8

10

4

15

8

18

21

12

16

Come and Get It

Marching Bass Drum

Performed by Selena Gomez
Arranged by Stephen Rodgers

8

10

4

15

8

18

21

12

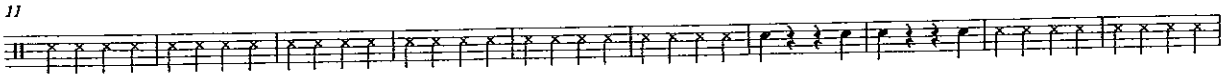
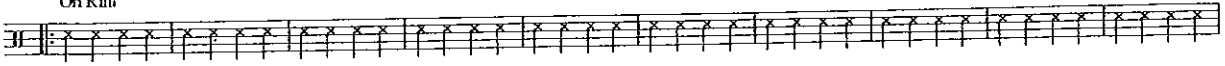
16

Low Rider

arr. Stephen Rodgers

Snare Drum

$\text{♩} = 140$
On Rim



Snare Drum

Radioactive

Imagine Dragons
Arr. Stephen Rodgers
Exhale 9

$\text{♩} = 150$

Gasp In

Marching Tenor Drums

Radioactive

Imagine Dragons
Arr. Stephen Rodgers
Exhale 9

$\text{♩} = 150$

Gasp In

Marching Bass Drum

Radioactive

Imagine Dragons
Arr. Stephen Rodgers
Exhale 9

$\text{♩} = 150$

Gasp In

Marching Cymbals

Radioactive

Imagine Dragons
Arr. Stephen Rodgers
Exhale 9

$\text{♩} = 150$

Gasp In

16 Hit for Snare

7

25

8